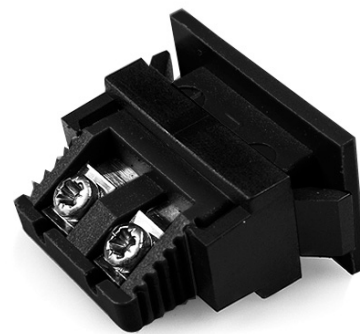


Connettore termocoppia a presa rettangolare in miniatura AM-J-FF Tipo J ANSI



Miniature Fascia Socket (with nylon mounting clip)
(dimensions in mm)

Labfacility are the UK's leading manufacturer of Temperature Sensors, Thermocouple Connectors and associated Temperature Instrumentation and stockings of Thermocouple Cables. The Company has been trading since 1971 and is ISO9001 accredited.

Connettore Termocoppia Miniatura Rettangolare Presa Fascia AM-J-FF Tipo J ANSI

Pinza in nylon per un fissaggio rapido e semplice al pannello. Tutte le prese di montaggio della fascia sono polarizzate tramite pin di dimensioni disuguali

Specifiche**Specifications**

Product Code	XE-9067-001
General Description	All fascia mounting sockets are polarised by means of unequally sized pins
Thermocouple Type	J ANSI
Connector Type	Fascia mounting socket
Connector Size	Miniature
Colour	Black
Max. Temperature	120°C
+Positive Contact	Iron
-Negative Contact	Copper Nickel
Standards Met	BS EN 50212:1997. RoHS